

This copy is for your personal, non-commercial use only.

If you wish to distribute this article to others, you can order high-quality copies for your colleagues, clients, or customers by [clicking here](#).

Permission to republish or repurpose articles or portions of articles can be obtained by following the guidelines [here](#).

The following resources related to this article are available online at www.sciencemag.org (this information is current as of November 10, 2010):

A correction has been published for this article at:

<http://www.sciencemag.org/cgi/content/full/sci;328/5981/974-b>

Updated information and services, including high-resolution figures, can be found in the online version of this article at:

<http://www.sciencemag.org/cgi/content/full/327/5968/1004>

Supporting Online Material can be found at:

<http://www.sciencemag.org/cgi/content/full/327/5968/1004/DC1>

A list of selected additional articles on the Science Web sites **related to this article** can be found at:

<http://www.sciencemag.org/cgi/content/full/327/5968/1004#related-content>

This article **cites 15 articles**, 8 of which can be accessed for free:

<http://www.sciencemag.org/cgi/content/full/327/5968/1004#otherarticles>

This article has been **cited by 2** article(s) on the ISI Web of Science.

This article has been **cited by 7** articles hosted by HighWire Press; see:

<http://www.sciencemag.org/cgi/content/full/327/5968/1004#otherarticles>

This article appears in the following **subject collections**:

Cell Biology

http://www.sciencemag.org/cgi/collection/cell_biol

mammalian cells with CobB deacetylase increased ASL activity (Fig. 3H), supporting a direct role of acetylation in ASL inactivation. The dual regulation of ASL by both amino acids and glucose indicates that acetylation may have an important role in the coordination of metabolic pathways. In the presence of sufficient glucose, amino acid catabolism for energy production and gluconeogenesis would be inhibited. In the presence of abundant amino acids and low glucose, cells would switch to using amino acids for energy production with enhanced urea cycle activity. Cells may use acetylation to coordinate multiple pathways in order to achieve these metabolic adaptations

Phosphoenolpyruvate carboxykinase 1 (PEPCK1; EC code 4.1.1.32) is a key regulatory enzyme in gluconeogenesis (Fig. 1D) (9, 10). Three acetylated lysine residues were identified in PEPCK1 by MS analysis (Lys⁷⁰, Lys⁷¹, and Lys⁵⁹⁴; table S2). Acetylation of PEPCK1 was enhanced in cells treated with high concentrations of glucose (Fig. 4A) but was decreased by addition of amino acids in glucose-free medium (Fig. 4B). These results suggest a potential mechanism by which cells could regulate gluconeogenesis through regulating acetylation of PEPCK1 in response to the availability of extracellular fuels.

In searching for an effect of acetylation on the regulation of PEPCK1, we noticed that levels of endogenous PEPCK1 protein were decreased by high glucose (Fig. 4C). Furthermore, treatment with TSA and NAM caused a 70% reduction in the amount of PEPCK1 protein in both HEK293T and Chang liver cells (Fig. 4D). PEPCK1 was stable in cells in glucose-free medium but unstable

in high-glucose medium (Fig. 4E). When cells were treated with TSA and NAM, PEPCK1 was unstable even in glucose-free medium or in the presence of amino acids. These results indicate that acetylation may regulate the stability of PEPCK1. We replaced the three putative acetylation lysine residues by arginine (PEPCK1^{3KR}) or glutamine (PEPCK1^{3KQ}) to abolish or mimic acetylation, respectively. The PEPCK1^{3KR} mutant was more stable than the wild type, whereas the PEPCK1^{3KQ} mutant remained unstable (Fig. 4F). Moreover, treatment of cells with TSA and NAM failed to destabilize the PEPCK1^{3KR} mutant.

The importance of lysine acetylation in the regulation of chromatin dynamics and gene expression is well appreciated. Our study and others extend the scope of cell regulation by lysine acetylation to an extent comparable to that of other major posttranslational modifications such as phosphorylation and ubiquitination. We show that most intermediate metabolic enzymes are acetylated and that acetylation can directly affect the enzyme activity or stability. We found that acetylation of metabolic enzymes changed in response to the alterations of extracellular nutrient availability, providing evidence for a physiological role of dynamic acetylation in metabolic regulation. The mechanism of acetylation in regulating metabolism may be conserved during evolution. Many metabolic enzymes in *Escherichia coli* are acetylated, although the functional importance of these acetylations has not been investigated (11). We propose that lysine acetylation is an evolutionarily conserved mechanism involved in regulation of metabolism in response to nutrient availability

and cellular metabolic status. Acetylation may play a key role in the coordination of different metabolic pathways in response to extracellular conditions.

References and Notes

1. X. J. Yang, E. Seto, *Mol. Cell* **31**, 449 (2008).
2. S. C. Kim *et al.*, *Mol. Cell* **23**, 607 (2006).
3. C. Choudhary *et al.*, *Science* **325**, 834 (2009).
4. K. Alvares *et al.*, *Cancer Res.* **54**, 2303 (1994).
5. C. S. Yeh *et al.*, *Cancer Lett.* **233**, 297 (2006).
6. P. A. Watkins *et al.*, *J. Clin. Invest.* **83**, 771 (1989).
7. E. Trevisson *et al.*, *Hum. Mutat.* **28**, 694 (2007).
8. R. L. Jungas, M. L. Halperin, J. T. Brosnan, *Physiol. Rev.* **72**, 419 (1992).
9. H. Lardy, P. E. Hughes, *Curr. Top. Cell. Regul.* **24**, 171 (1984).
10. P. She *et al.*, *Mol. Cell. Biol.* **20**, 6508 (2000).
11. J. Zhang *et al.*, *Mol. Cell. Proteomics* **8**, 215 (2009).
12. We thank members of Fudan MCB laboratory for their valuable inputs throughout this study and S. Jackson for reading the manuscript. Supported by the 985 program from the Chinese Ministry of Education, state key development programs of basic research of China (grants 2009CB918401 and 2006CB806700), the national high technology research and development program of China (grant 2006AA02A308), Chinese National Science Foundation grants 30600112 and 30871255, Shanghai key basic research projects (grants 06JC14086, 07PJ14011, 08JC1400900), and NIH grants R01GM51586, R01CA108941, and R01CA65572 (K.L.G., X.C., and Y.X.).

Supporting Online Material

www.sciencemag.org/cgi/content/full/327/5968/1000/DC1
Materials and Methods

Figs. S1 to S3

Tables S1 to S3

References

27 July 2009; accepted 7 January 2010

10.1126/science.1179689

Acetylation of Metabolic Enzymes Coordinates Carbon Source Utilization and Metabolic Flux

Qijun Wang,¹ Yakun Zhang,² Chen Yang,³ Hui Xiong,^{1,2} Yan Lin,⁴ Jun Yao,⁴ Hong Li,³ Lu Xie,³ Wei Zhao,³ Yufeng Yao,⁵ Zhi-Bin Ning,³ Rong Zeng,³ Yue Xiong,^{4,6} Kun-Liang Guan,^{4,7} Shimin Zhao,^{1,4*} Guo-Ping Zhao^{1,2,3,8*}

Lysine acetylation regulates many eukaryotic cellular processes, but its function in prokaryotes is largely unknown. We demonstrated that central metabolism enzymes in *Salmonella* were acetylated extensively and differentially in response to different carbon sources, concomitantly with changes in cell growth and metabolic flux. The relative activities of key enzymes controlling the direction of glycolysis versus gluconeogenesis and the branching between citrate cycle and glyoxylate bypass were all regulated by acetylation. This modulation is mainly controlled by a pair of lysine acetyltransferase and deacetylase, whose expressions are coordinated with growth status. Reversible acetylation of metabolic enzymes ensure that cells respond environmental changes via promptly sensing cellular energy status and flexibly altering reaction rates or directions. It represents a metabolic regulatory mechanism conserved from bacteria to mammals.

Protein lysine acetylation regulates wide range of cellular functions in eukaryotes, especially transcriptional control in the nucleus (1, 2). It also plays an extensive role in regulation of metabolic enzymes through vari-

ous mechanisms in human liver (3). In prokaryotes such as *Salmonella enterica*, reversible lysine acetylation is known to regulate the activity of acetyl-coenzyme A (CoA) synthetase (4). To determine how lysine acetylation globally regulates

the metabolism in prokaryotes, we determined the overall acetylation status of *S. enterica* proteins under either fermentable glucose-based glycolysis or under oxidative citrate-based gluconeogenesis. By immunopurification of acetylated peptides with antibody to acetyllysine and peptide identification

¹State Key Laboratory of Genetic Engineering, Department of Microbiology, School of Life Sciences and Institute of Biomedical Sciences, Fudan University, Shanghai 200032, China. ²MOST-Shanghai Laboratory of Disease and Health Genomics, Chinese National Human Genome Center at Shanghai, Shanghai 201203, China. ³Key Laboratory of Synthetic Biology, Bioinformatics Center and Laboratory of Systems Biology, Institute of Plant Physiology and Ecology, Shanghai Institutes for Biological Sciences, Chinese Academy of Sciences, Shanghai 200032, China. ⁴Molecular Cell Biology Laboratory, Institute of Biomedical Sciences, Fudan University, Shanghai 200032, China. ⁵Laboratory of Human Bacterial Pathogenesis, Department of Medical Microbiology and Parasitology, Institute of Medical Sciences, Shanghai Jiao Tong University School of Medicine, Shanghai 200025, China. ⁶Department of Biochemistry and Biophysics and Lineberger Comprehensive Cancer Center, University of North Carolina at Chapel Hill, Chapel Hill, NC 27599, USA. ⁷Department of Pharmacology and Moores Cancer Center, University of California San Diego, La Jolla, CA 92093, USA. ⁸Department of Microbiology and Li Ka Shing Institute of Health Sciences, The Chinese University of Hong Kong, Prince of Wales Hospital, Shatin, New Territories, Hong Kong SAR, China.

*To whom correspondence should be addressed. E-mail: zhaosm@fudan.edu.cn (S.Z.); gpzhao@sibs.ac.cn (G.-P.Z.)

by mass spectrometry analyses, we identified a total of 235 acetylated peptides that matched to 191 proteins in *S. enterica*. About 50% of the acetylated proteins participated in multiple metabolic pathways (tables S1 and S2), and about 90% of the enzymes of central metabolism were acetylated (Fig. 1A). Stable isotope labeling with amino acids in cell culture (SILAC) quantitative analysis showed that, among 15 enzymes that had altered acetylation in response to different carbon sources, all showed greater acetylation in cells grown in glucose than in cells grown in citrate (Fig. 1B), consistent with our estimations based on numbers of repetitive detection of acetylated fragments (Fig. 1A).

The abundant acetylation of metabolic enzymes and the concerted changes in acetylation dependent on carbon source indicate that acetylation may mediate adaptation to various carbon sources in *S. enterica*, which has only one major bacterial protein acetyltransferase,

Pat, and one nicotinamide adenine dinucleotide (NAD⁺)-dependent deacetylase, CobB (4, 5) (fig. S1). Acetylation of central metabolic enzymes in a *pat* null mutant (Δpat) was reduced, whereas acetylation of these enzymes was elevated in a *cobB* null mutant ($\Delta cobB$) compared with that of the wild-type strain when grown in glucose (Fig. 1B). When grown in citrate, the acetylation of metabolic enzymes in $\Delta cobB$ cells was also increased over the wild-type cells (Fig. 1B). On the other hand, there was no change in acetylation of ribosomal proteins in either $\Delta cobB$ or Δpat cells (Fig. 1B), supporting the notion that Pat and CobB are the major enzymes responsible for the reversible acetylation of central metabolic enzymes in *S. enterica*.

A physiological role of enzyme acetylation in mediating cellular adaptation to different metabolic fuels was suggested by the different growth properties of wild-type, Δpat , or $\Delta cobB$ strains grown on different carbon sources (Fig.

2). The $\Delta cobB$ cells (with increased acetylation) grew faster than wild-type cells in minimal glucose medium but grew slower than wild-type cells in minimal citrate medium (Fig. 2A), whereas the Δpat cells (with decreased acetylation) had the opposite growth properties (Fig. 2A). The $\Delta pat/\Delta cobB$ double mutant behaved similarly to the Δpat strain, consistent with the notion that the CobB deacetylase would have no effect on target proteins if they were not acetylated by Pat (Fig. 2A). Treatment of wild-type cells with nicotinamide (NAM), an inhibitor for CobB (6), like *cobB* mutation, suppressed cell growth in the citrate-containing minimal medium but had little effect on cell growth in minimal medium containing glucose (Fig. 2B), consistent with the fact that metabolic enzyme acetylation is higher in *S. enterica* when cells grow on glucose (Fig. 1).

We tested the regulatory role of Pat and CobB in coordinating carbon source adaptation by mea-

Fig. 3. Regulation of central metabolic enzymes by acetylation.

(A) Acetylation of metabolic enzymes expressed in $\Delta cobB$ and Δpat strains. His-tagged GapA, AceA, or AceK proteins were over-expressed in the WT, $\Delta cobB$, and Δpat strains and purified to homogeneity. Equal amounts of each protein were used and acetylation was determined. SDS PAGE indicates SDS polyacrylamide gel electrophoresis. (B and C) GapA, AceA, and AceK activities by Pat-mediated acetylation and CobB-mediated deacetylation. His-tagged GapA, AceA, and AceK proteins were purified from WT *S. enterica* and subjected to in vitro acetylation by Pat or deacetylation by CobB. (B) Reciprocal regulation of glycolytic and gluconeogenic activities of GapA by Pat and CobB. (C) Reciprocal regulation of AceA activity and AceK-controlled ICDH activities by Pat and CobB in vitro. Error bars indicate SD of three measurements.

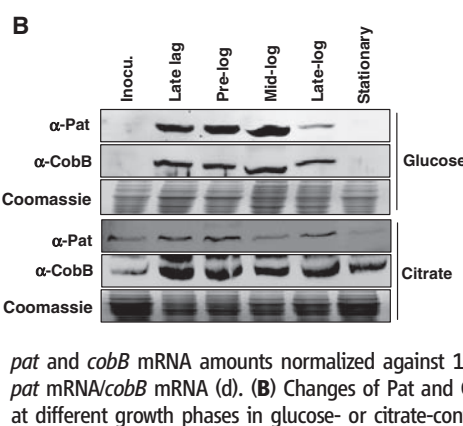
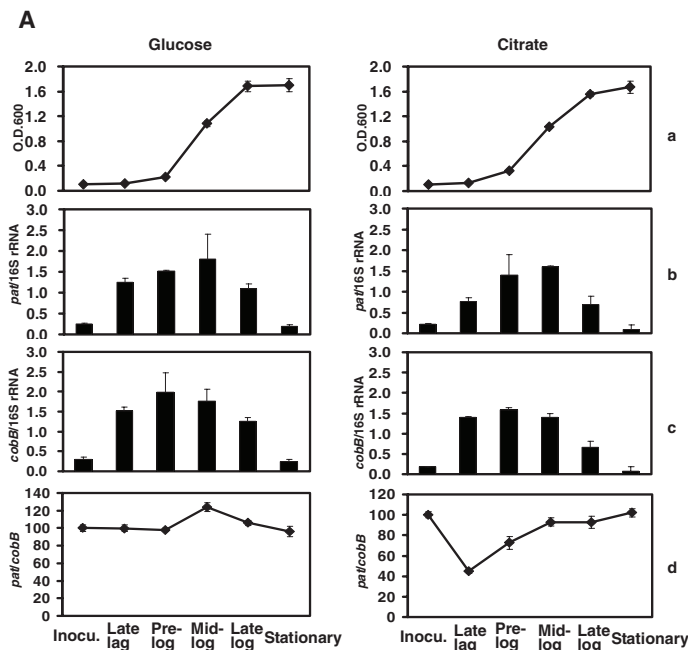
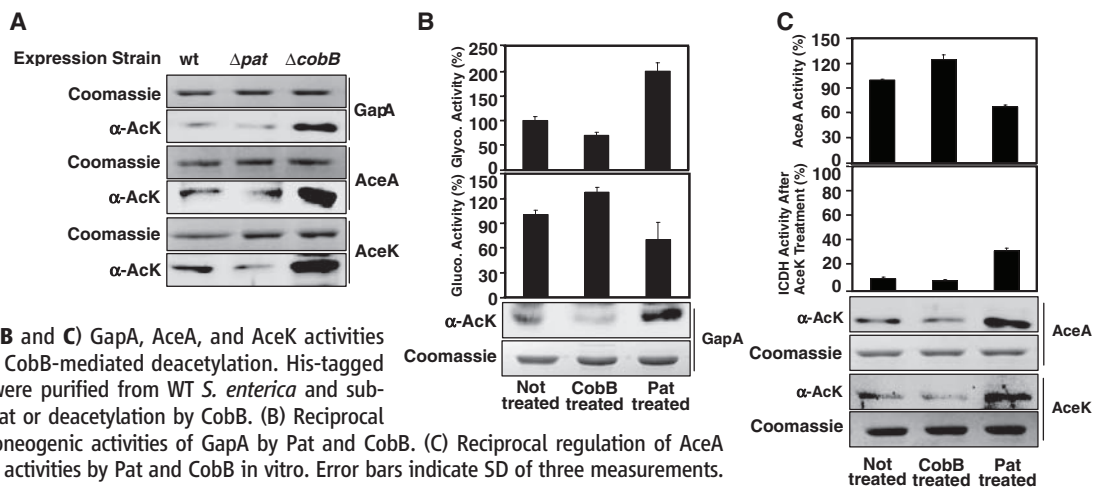


Fig. 4. Differential transcription of *pat* and *cobB* in response to metabolic status and various carbon sources. *S. enterica* cells were incubated in LB and then washed and transferred into minimal medium containing 50 mM glucose or citrate. Cells were sampled at indicated growth phases. (A) Growth curve (a); *pat* and *cobB* mRNA amounts normalized against 16S rRNA (b and c); ratio of *pat* mRNA/*cobB* mRNA (d). (B) Changes of Pat and CobB protein concentrations at different growth phases in glucose- or citrate-containing medium.

suring in vivo metabolic flux profiles with ^{13}C -labeled glucose or citrate as the tracer followed by gas chromatography–mass spectrometry (GC-MS) analysis (7, 8). The overall metabolic flux profiles in *S. enterica* showed distinct patterns during growth on glucose or citrate (Fig. 2C). The glyoxylate bypass was activated, and the carbon flow favored gluconeogenesis when cells were grown on citrate. We also quantitatively compared the flux profiles through glycolysis (v_{GapA}), gluconeogenesis (v_{PckA}), tricarboxylic acid (TCA) cycle (v_{ICDH}), and glyoxylate bypass (v_{AceA}) of the wild-type, Δpat , and $\Delta cobB$ strains to assess the relation between metabolic flux profiles and acetylation status. When cells were grown in the presence of glucose, the $\Delta cobB$ strain had 2.07-fold greater glycolysis/gluconeogenesis flux ratio than the Δpat strain had (Fig. 2D), whereas the glycolysis/gluconeogenesis flux ratio of the wild-type strain was 47% lower than that of the $\Delta cobB$ strain but 40.7% higher than that of the Δpat strain (Fig. 2D). When cells were grown in the presence of citrate, the Δpat strain had 2.21-fold greater glyoxylate bypass/TCA flux ratio than that of the $\Delta cobB$ strain (Fig. 2D), whereas the glyoxylate/TCA flux ratio of the wild-type strain was 55% lower than that of the Δpat strain but 43% higher than that of the $\Delta cobB$ strain (Fig. 2D). These results and the effect of glucose on acetylation of metabolic enzymes (Fig. 1) indicate that carbon source-associated acetylation may affect the relative activities of metabolic enzymes and thus modulate metabolic flux profiles.

Direct evidence of acetylation-mediated regulation for central metabolic enzymes was derived from biochemical studies with three enzymes (table S1): the glyceraldehyde phosphate dehydrogenase (GapA), which channels glycolysis or gluconeogenesis flux bidirectionally, as well as the isocitrate lyase (AceA) and the isocitrate dehydrogenase (ICDH) kinase/phosphatase (AceK), both of which control the flux distribution of isocitrate between the energy-generating TCA cycle and the gluconeogenesis-requiring glyoxylate pathway when only an oxidative carbon source (such as citrate) is available (9). Anti-acetylsine immunoblot showed that all three enzymes had increased acetylation in the $\Delta cobB$ strain (Fig. 3A). Acetylation of these three enzymes decreased to various degrees in the Δpat strain. The remaining acetylation detected in the Δpat strain may reflect the presence of other acetyltransferases (fig. S1). All these enzymes were more heavily acetylated in cells grown in minimal media with glucose than those grown with citrate (fig. S4). These observations confirmed that GapA, AceA, and AceK are under regulation of Pat and CobB.

To demonstrate a direct effect of acetylation on enzyme activity, we purified recombinant Pat and CobB protein and treated GapA, AceK, and AceA enzymes in vitro (fig. S2). Increasing GapA acetylation by Pat acetylase treatment increased its glycolysis activity by 100%, whereas its activity in promoting gluconeogenesis was inhibited

by more than 30% (Fig. 3B), supporting the notion that acetylation stimulates glycolysis but inhibits gluconeogenesis. Consistently, in vitro deacetylation of GapA by CobB caused a 30% increase in gluconeogenic activity but a 27% decrease in glycolytic activity (Fig. 3B). The increase of AceA acetylation by in vitro treatment with Pat (Fig. 3C) or acetylation-mimicked mutation (fig. S3) led to 30% and 20% loss in AceA-specific activity, respectively. In vitro deacetylation of AceA by CobB, on the other hand, led to a 24% increase in AceA-specific activity (Fig. 3C). The activity of AceK was measured by its ability to inactivate its native substrate, ICDH, which catalyzes the conversion of isocitrate to α -ketoglutarate. In vitro acetylation of AceK by Pat led to a 60% reduction of its ability to inactivate ICDH (by phosphorylating ICDH), whereas in vitro deacetylation of AceK by CobB increased AceK's ability to inactivate ICDH (Fig. 3C), suggesting that acetylation may activate the phosphatase activity of AceK toward ICDH, consistent with the fact that both acetylation and the acetylation mimetic mutation of AceK activated the phosphorylated ICDH (figs. S4 and S5). Together, these results demonstrate that activities of GapA, AceA, and AceK enzymes are regulated through acetylation, which in turn may direct the flux direction toward glycolysis or gluconeogenesis or the distribution of isocitrate between the TCA cycle and glyoxylate bypass.

We also investigated the expression of *pat* and *cobB* genes in cells grown on different carbon sources. Real-time reverse transcription polymerase chain reaction (PCR) analysis, using 16S ribosomal RNA (rRNA) as the internal control, revealed that both *pat* and *cobB* genes were more actively transcribed during log phase growth than other growth phases when cells were grown in the presence of either glucose or citrate (Fig. 4A). Accordingly, the concentrations of Pat and CobB proteins were increased (fig. S6 and Fig. 4B). During the stationary phase, cells that grew in the presence of either glucose or citrate had similar ratios of *pat* mRNA/*cobB* mRNA. However, when rich medium-incubated cells were transferred to minimal medium containing glucose, acetylation peaked at mid-log phase (Fig. 4A), whereas if they were transferred to minimal medium containing citrate, acetylation decreased in both prelog and early log phases before it returned to basal level in late log and stationary phases (Fig. 4A). The lower amount of cellular acetylation was apparently needed for efficient utilization of citrate. These results indicate that the expression (and probably total cellular activities) of Pat and CobB are regulated differentially in response to different carbon sources, although its underlying mechanism is yet to be revealed.

The central metabolic pathways constitute the backbone of cell metabolism. Such pathways use various carbon sources to provide building blocks, cofactors, and energy for cell growth. For cells to respond flexibly and promptly to avail-

ability of environmental carbon sources, the directions and/or rates of the metabolic reactions need to be modulated concomitantly and globally. Transcription regulations merely adjust the amount of metabolic enzymes in a unidirectional manner, whereas allosteric effects only modulate the catalytic activities of individual enzymes responsible for specific reactions of metabolic pathways (10). We have found a potential regulatory circuit coordinating the carbon flow of *S. enterica* central metabolism by reversible acetylation. Acetylation uses acetyl-CoA and NAD^+ , two molecules that directly involved both in metabolism and energy sensing, as substrates, provides unparalleled advantages in sensing cellular energy status, and thus could fit the role for global metabolic modulation. The identification of extensively acetylated metabolic enzymes in both human and prokaryotes and reports of broad metabolic regulatory roles of this modification (11–16) indicate that reversible lysine acetylation may represent an evolutionarily conserved mechanism of metabolic regulation in both eukaryotes and prokaryotes.

References and Notes

1. M. Grunstein, *Nature* **389**, 349 (1997).
2. X. J. Yang, E. Seto, *Oncogene* **26**, 5310 (2007).
3. S. Zhao *et al.*, *Science* **327**, 1000 (2010).
4. V. J. Starai, I. Celic, R. N. Cole, J. D. Boeke, J. C. Escalante-Semerena, *Science* **298**, 2390 (2002).
5. V. J. Starai, J. C. Escalante-Semerena, *J. Mol. Biol.* **340**, 1005 (2004).
6. K. J. Bitterman, R. M. Anderson, H. Y. Cohen, M. Latorre-Esteves, D. A. Sinclair, *J. Biol. Chem.* **277**, 45099 (2002).
7. Q. Hua, C. Yang, T. Baba, H. Mori, K. Shimizu, *J. Bacteriol.* **185**, 7053 (2003).
8. N. Zamboni, E. Fischer, U. Sauer, *BMC Bioinformatics* **6**, 209 (2005).
9. A. J. Cozzone, *Annu. Rev. Microbiol.* **52**, 127 (1998).
10. F. C. Neidhardt, *Escherichia coli and Salmonella* (ASM Press, Washington, DC, ed. 2, 1996).
11. J. Zhang *et al.*, *Mol. Cell. Proteomics* **8**, 215 (2009).
12. C. Choudhary *et al.*, *Science* **325**, 834 (2009); published online 16 July 2009 (10.1126/science.1175371).
13. Y. Y. Lin *et al.*, *Cell* **136**, 1073 (2009).
14. O. R. Bereshchenko, W. Gu, R. Dalla-Favera, *Nat. Genet.* **32**, 606 (2002).
15. J. Landry *et al.*, *Proc. Natl. Acad. Sci. U.S.A.* **97**, 5807 (2000).
16. W. C. Hallows, S. Lee, J. M. Denu, *Proc. Natl. Acad. Sci. U.S.A.* **103**, 10230 (2006).
17. We thank members of Fudan Molecular Cell Biology laboratory for their inputs throughout this work. L. Wang of Nankai University, China, provided the *S. Enterica* G2466 for this study. This work is supported by state key development programs of basic research of China (2009CB918401 and 2006CB806700), national high technology research and development program of China (2006AA02A308), National Natural Science Foundation of China (30830002), and Shanghai key basic research project, China (08JC1400900).

Supporting Online Material

www.sciencemag.org/cgi/content/full/327/5968/1004/DC1

Materials and Methods

SOM Text

Figs. S1 to S6

Tables S1 and S2

References

27 July 2009; accepted 7 January 2010

10.1126/science.1179687

ERRATUM

Post date 21 May 2010

Reports: "Acetylation of metabolic enzymes coordinates carbon source utilization and metabolic flux" by Q. Wang *et al.* (19 February, p. 1004). In Fig. 2B, the inhibitor used to mimic the *cobB* mutation was NAM (nicotinamide) not NAD⁺ (nicotinamide adenine dinucleotide).